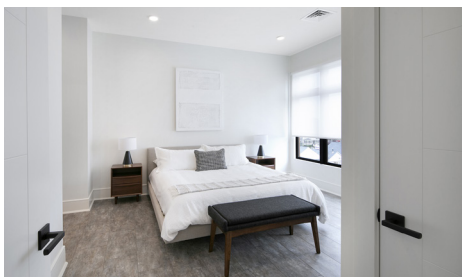




## G2D GROUP ANNOUNCES THE SHIPYARD'S OFFICIAL GRAND OPENING



### RIVERHEAD, NEW YORK'S FIRST LUXURY RESIDENTIAL BUILDING

**T**he Shipyard, located at 331 East Main Street on the boardwalk in the center of Downtown Riverhead, NY is a contemporary, four-story residential building consisting of 36 luxury units. The Shipyard is the newest premium property developed by the Huntington NY based G2D Group.

The impressive, state-of-the-art complex boasts modern amenities and stellar conveniences. 24-Hour video surveillance, "Smart" Key Fob entry control from the resident's own mobile phone for added security, private parking lot, and concierge cleaning services - handyman, and dog walking. Premium interior finishes include slab stone backsplashes, Quartz countertops, Stainless Steel professional-grade appliances, wine refrigerators,

walk-in closets, and in-unit washers and dryers. Other warm minimalist touches include LED lighting, modern bathrooms with stall showers and soaking tubs, and high ceilings. Some residences include private balconies with stunning views of the Peconic River. The Shipyard also offers a breathtaking spacious rooftop lounge, business center and private gym for residents to enjoy.

G2D Group is dedicated to investing in Long Island's neighborhoods while providing contemporary, sophisticated tenant-focused developments.

\* For more information about The Shipyard, please contact [info@g2dgroup.com](mailto:info@g2dgroup.com) or 631-315-9633